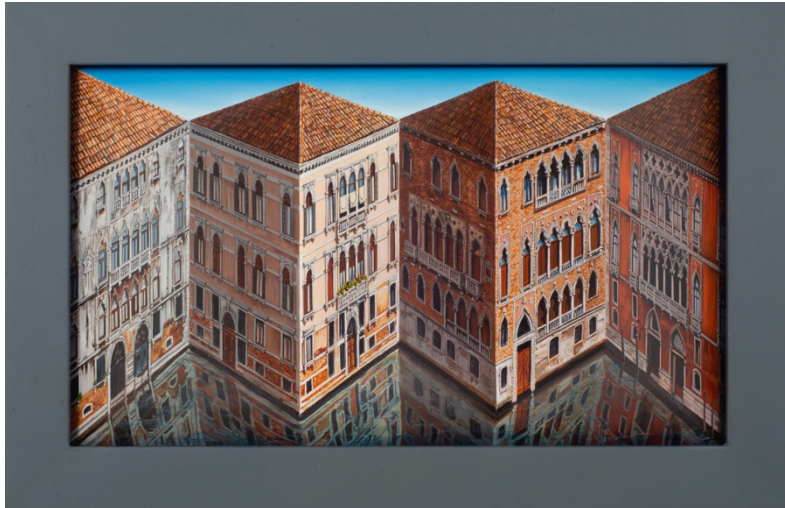


Press Release

The Die is Cast

A solo exhibition by Patrick Hughes

Exhibition at Zuleika Gallery, Woodstock from 15th July- 29th August 2022



Patrick Hughes (b.1939) *Capriccio*, oil on board construction, 32.5 x 50

Zuleika Gallery is delighted to announce the exhibition *The Die is Cast* which will be open from 15th July to 29th August. The exhibition will feature original works and prints by artist Patrick Hughes.

Hughes early works were often playful putting things back to front or squashing them flat, like *Clown* (1963), setting words against images, like *One Two* (1962), or against themselves, like *Tick Cross* (1962). He explored visual oxymorons and paradoxes. His fascination with the illusion of perspective began with works like *Infinity* (1963), *Three Doors* (1964) and *The Space Ruler* (1965).

In the 1970s Hughes hung his investigations of perception and illusion on the motif of the rainbow in a series of prints and paintings, such as *Pile of Rainbows* (1973) and *Leaning on a Landscape* (1979).

His first “reverse perspective” or “reverspective” was *Sticking Out Room* (1964) which was a life-size room exhibited at the Institute of Contemporary Arts in 1970. He returned to explore reverspective in 1990 with *Up the Line* and *Down the Road* (1991). He explains “reverspectives” are three-dimensional paintings which when viewed from the front give the impression of viewing a painted flat surface that shows a perspective view. However, as soon as the viewer moves their head, even slightly, the three-dimensional surface that supports the perspective view accentuates the depth of the image and accelerates the shifting perspective far more than the brain normally allows. This provides a powerful and disorientating impression of depth and movement. *Venice the Menace*, along with other paintings in the Venice collection, is a perfect example of this.

Hughes continues his reverspective work to this day from his studio in Shoreditch and today we are lucky enough to be exhibiting eight of his paintings for sale in Zuleika Gallery in Woodstock.

ENDS

Venue

Zuleika Gallery
6 Park Street
Woodstock
Oxfordshire
OX20 1SP

Press Contact

Lizzie Collins – lizzie@zuleikagallery.com
Tel: +44 (0) 7939 566085

Opening Hours

Monday, Wednesday – Saturday 10- 5
Sunday 2- 5
Tuesday – Closed

About the Artist

Patrick Hughes was born in 1939 in Birmingham. He went to the James Graham Day College in Leeds in 1959 and later taught at the Leeds College of Art before becoming an independent artist. He now lives above his studio in Old Street in London.

About Zuleika Gallery

Founded in Oxford in 2015, Zuleika Gallery's focus is on Modern British and emerging contemporary art. Founder Lizzie Collins is a history of art graduate of UCL, and a postgraduate of the Courtauld Institute in London. She was a director and auctioneer at Bonhams, and a specialist at Christies in 20th Century British Art, before founding Zuleika Gallery. The gallery operated in the heart of St James's from 2017- 2021 and has now taken up permanent residence in Cromwell Place, South Kensington. The Woodstock Gallery opening in August 2020. The building, which dates to the early 17th century, is next to The Oxfordshire Museum, opposite the historic Bear Hotel and a short walk from the town entrance to Blenheim Palace. Home to the Blenheim Art Foundation. The gallery is committed to making art accessible and caters for both the entry level collector and the connoisseur. It also offers bespoke art advisory service for private or corporate collectors.